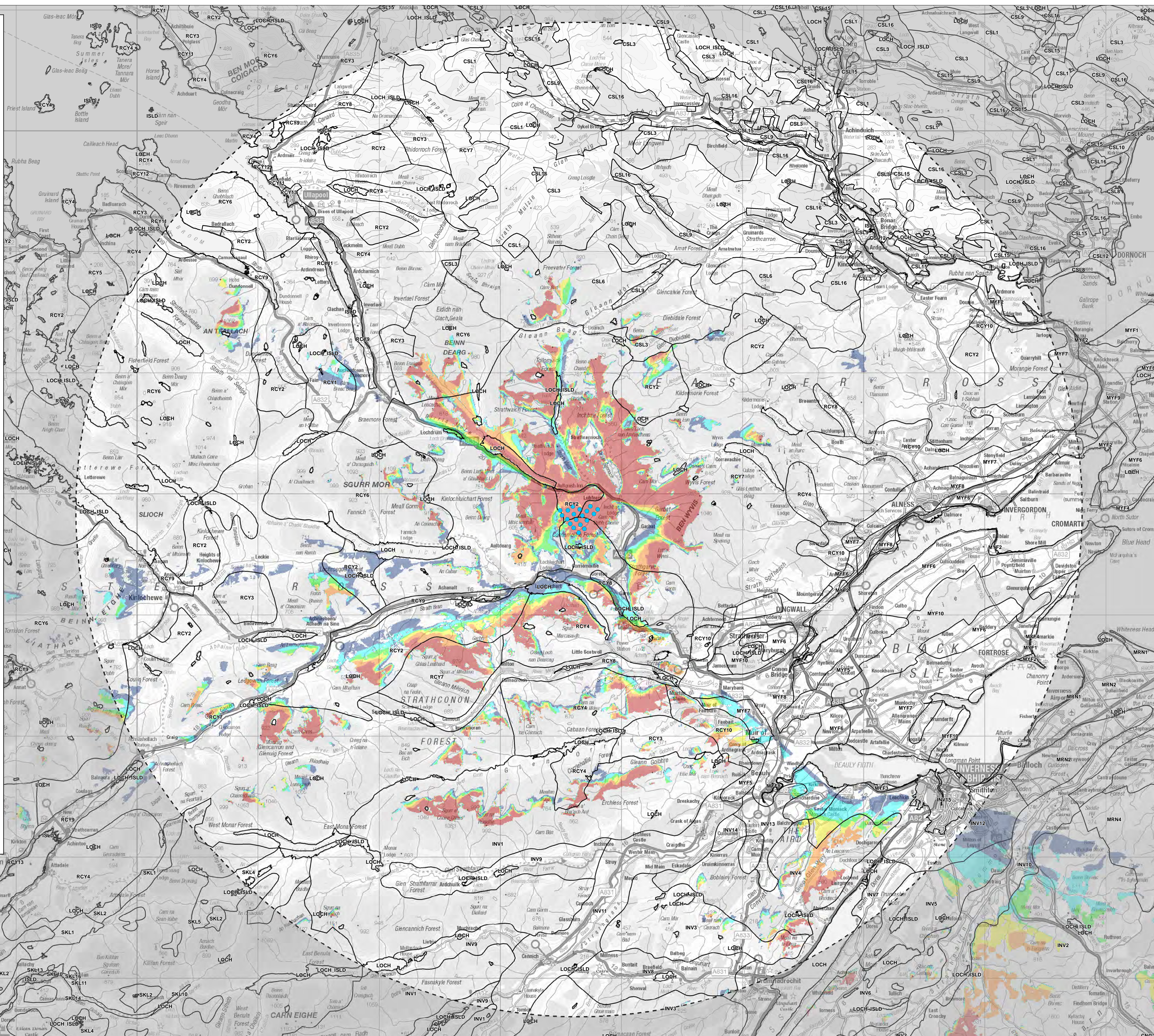


Legend:

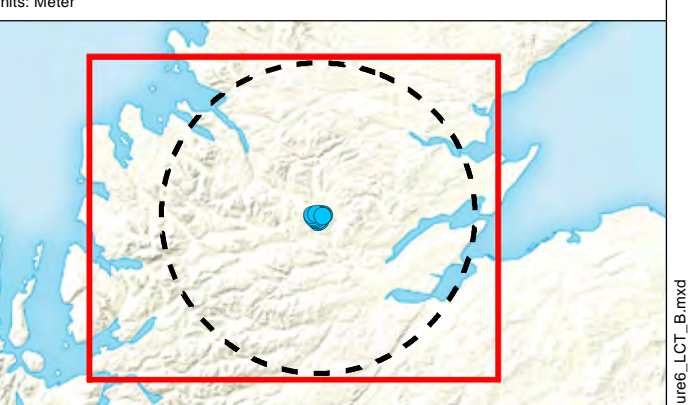
- Scottish Landscape Character Assessment**
- CNG2 - Uplands and Glens
 - CSL1 - Sweeping Moorland
 - CSL10 - Coastal Shelf
 - CSL12 - Town
 - CSL15 - Small Farms and Crofts
 - CSL16 - Coniferous Woodland Plantation
 - CSL3 - Moorland Slopes and Hills
 - CSL6 - Irregular Massif
 - CSL8 - Long Beaches Dunes and Links
 - CSL9 - Strath
 - INV1 - Rugged Massif
 - INV10 - Farmed Straths
 - INV11 - Narrow Farmed Straths
 - INV12 - Rolling Farmland and Woodland
 - INV13 - Enclosed Farmland
 - INV14 - Crofting Settlement
 - INV15 - Inverness
 - INV2 - Rolling Uplands
 - INV3 - Rocky Moorland Plateau
 - INV4 - Rocky Moorland Plateau with Woodland
 - INV5 - Flat Moorland Plateau with Woodland
 - INV6 - Farmed and Wooded Foothills
 - INV7 - Broad Step-Sided Glen
 - INV8 - Wooded Glen
 - INV9 - Narrow Wooded Glen
 - ISLD - Coastal Island
 - LOCH - Inland Loch
 - LOCH_ISLD - Loch Island
 - MRN1 - Coastal
 - MRN2 - Coastal Lowlands
 - MRN4 - Uplands
 - MYF1 - Open Firth
 - MYF10 - Forested Backdrop
 - MYF2 - Enclosed Firth
 - MYF3 - Narrow Firth Corridor
 - MYF4 - Hard Coastal Shore
 - MYF5 - Crofting
 - MYF6 - Open Farmed Slopes
 - MYF7 - Forest Edge Farming
 - MYF8 - Enclosed Farmed Landscapes
 - MYF9 - Intensive Farming
 - RCY1 - Smooth Moorland
 - RCY10 - Forest Edge Farming
 - RCY11 - Linear Crofting
 - RCY12 - Scattered Crofting
 - RCY13 - Harbour Settlement
 - RCY2 - Undulating Moorland
 - RCY3 - Sloping Terrace Moorland
 - RCY4 - Rocky Moorland
 - RCY5 - Cnocan
 - RCY6 - Rugged Mountain Massif
 - RCY7 - Rounded Hills
 - RCY8 - Narrow Farmed Strath
 - RCY9 - Wide Farmed Strath
 - SKL1 - Smooth Stepped Moorland
 - SKL10 - Coastal Strath
 - SKL11 - Coniferous Woodland Plantation
 - SKL13 - Linear Crofting
 - SKL14 - Scattered Crofting
 - SKL16 - Rural Estate Settlement
 - SKL2 - Rocky Moorland and Rocky Undulating Plateau
 - SKL4 - Peat Hag
 - SKL5 - Rugged Massif



Legend:

- Proposed Turbines (Preliminary Layout)
- 40 km radius Study Area
- Number of turbines visible at blade tip level (175m)
 - 1 to 4
 - 5 to 7
 - 8 to 10
 - 11 to 13
 - 14 to 16
 - 17 to 19
- ▭ Scottish Landscape Character Assessment Boundaries

Notes: This map contains data from the following sources:
 Ordnance Survey
 Coordinate System: British National Grid
 Projection: Transverse Mercator
 Datum: OSGB 1936
 Units: Meter



Rev	Date	Description	Dm	Chk	App
01	26/02/2018	First Draft	AC	RB	RB

Kirkan Wind Farm

TITLE: **Figure 6 - Landscape Character Types and ZTV**

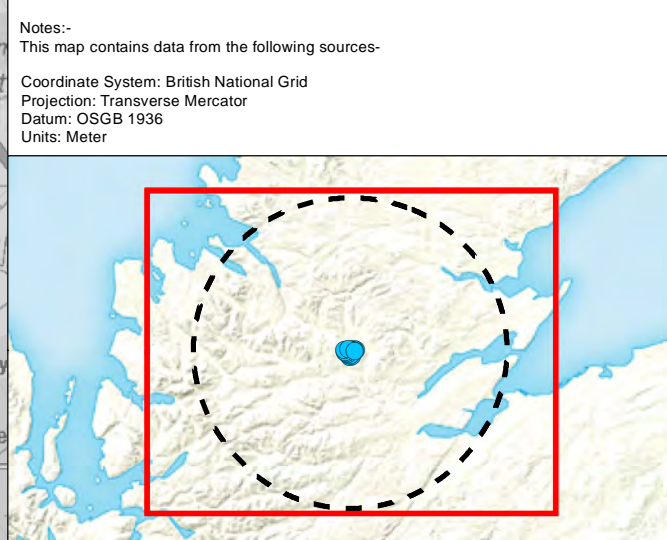
SCALE: 1:150,000 @ A1

REV 00



Legend:

- Proposed Turbines (Preliminary Layout)
- 40 km radius Study Area
- SNH Wind Farm Boundaries
- Installed
- Approved
- Application



This map contains data from the following sources:
 Coordinate System: British National Grid
 Projection: Transverse Mercator
 Datum: OSGB 1936
 Units: Meter

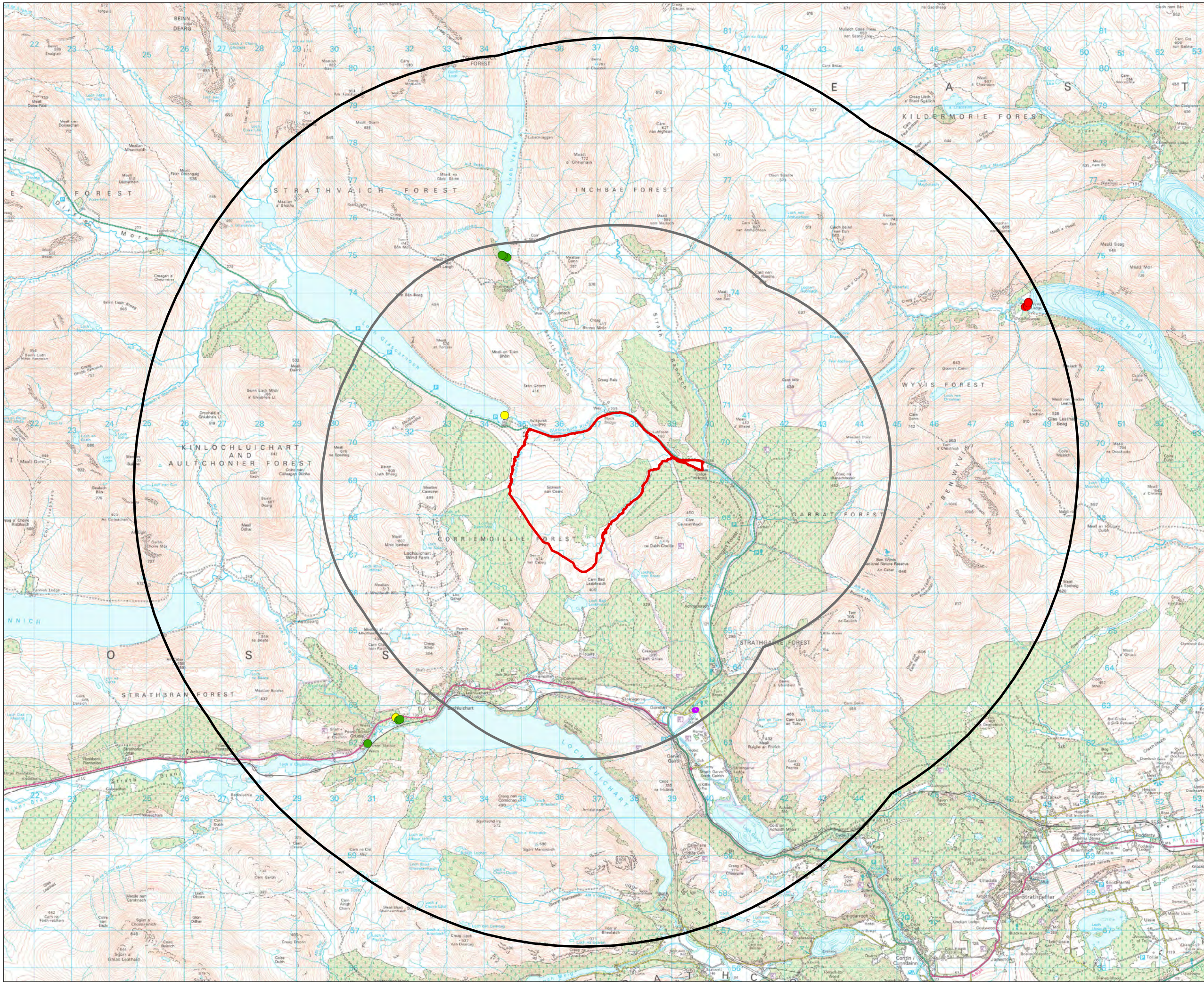
Rev	Date	Description	Dm	Chk	App
01	26/02/2018	First Draft	AC	RB	RB

Kirkana Wind Farm

TITLE: **Figure 7- Cumulative Wind Farms**

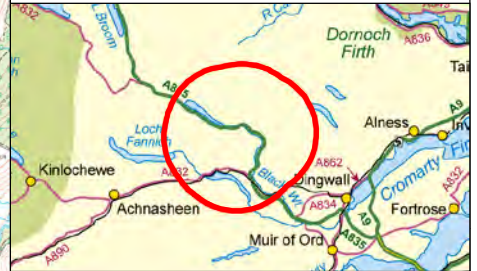
0 4,500 9,000
Meters

REV 00



- Legend:**
- Site Boundary
 - 5km Study Area
 - 10km Study Area
 - Category A Listed Building
 - Category B Listed Building
 - Category C Listed Building
 - Scheduled Monuments

Coordinate System: British National Grid
 Projection: Transverse Mercator
 Datum: OSGB 1936
 Units: Meter

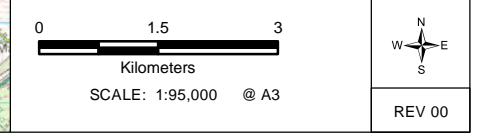


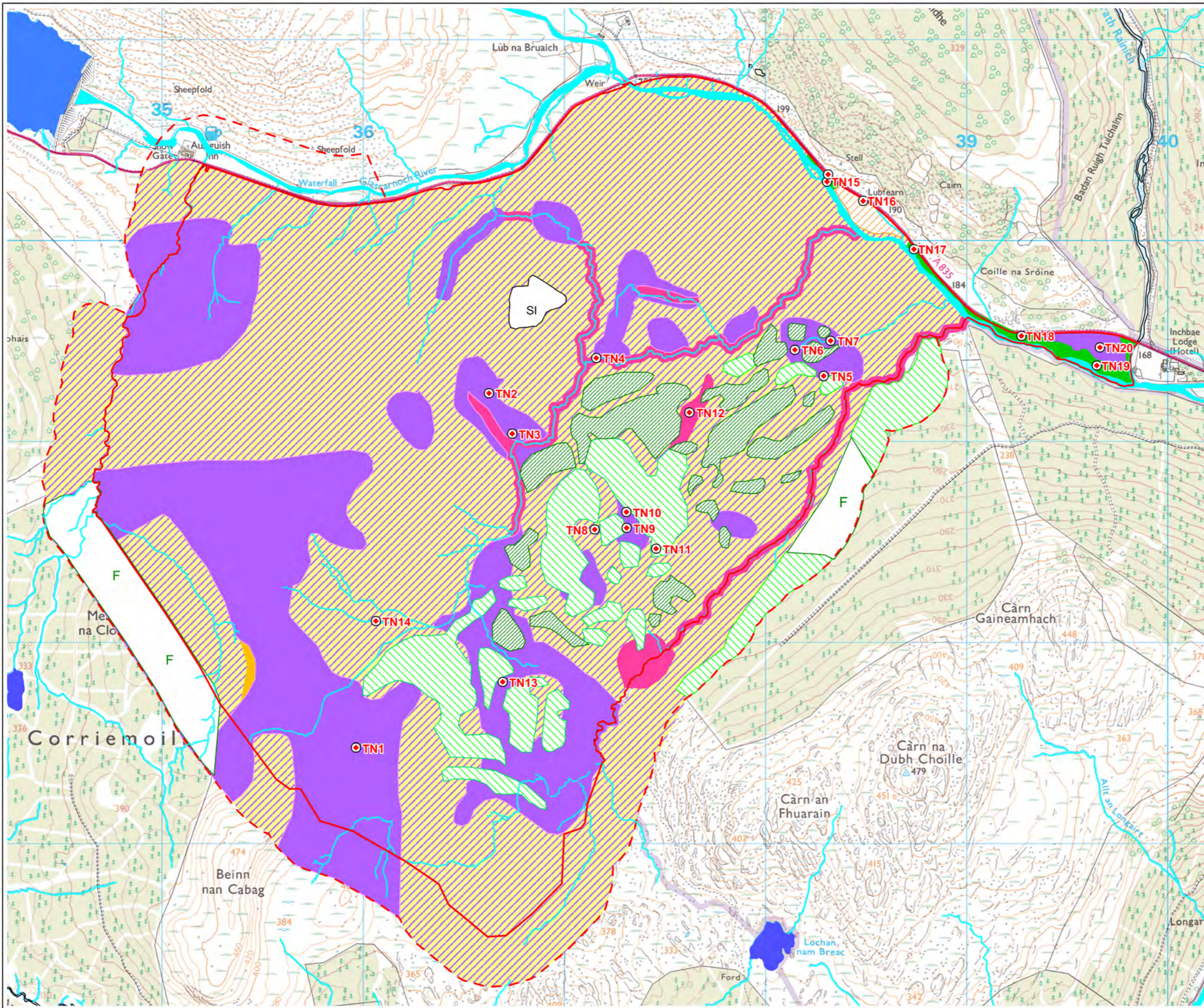
Rev	Date	Description	Drn	Chk	App
00	23/02/2018	First Draft	FC	JS	JS

Kirkan Wind Farm



TITLE: **Figure 8 - Cultural Heritage Designations Within 10km**





- Legend**
- Site boundary
 - Target note
 - Running water
 - Standing water
 - Broad-leaved woodland plantation (A1.2.2)
 - Coniferous woodland plantation (A1.1.2)
 - F Recently felled coniferous woodland plantation (A4.2)
 - Broad-leaved semi-natural woodland (A1.1.1)
 - Acid grassland (B1.2)
 - SI Poor semi-improved grassland (B6)
 - Wet dwarf shrub heath (D2)
 - Dry dwarf shrub heath (D1)
 - Flush (E2)
 - Blanket bog (E1.6.1)

This map contains data from the following sources:
 DATA SOURCE (DATE)
 Coordinate System: British National Grid
 Projection: Transverse Mercator
 Datum: OSGB 1936
 Units: Meter

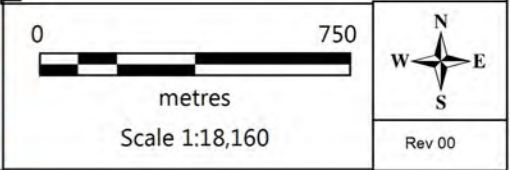


Rev	Date	Description	Drm	Chk	App
00	00/00/2018	First Draft	MR	NR	NR

Kirkan Wind Farm



TITLE **Figure 9 - Phase 1 Habitat Plan Map 1 of 1**



Site Photographs



Photograph 1: View from project area to the northwest, towards Aultguish Inn and Glascarnoch Dam.



Photograph 2: View from project area to the west, with the turbines of Corriemoillie (under construction) wind farm in the middle ground and the Lochluichart (operational) wind farm in the background.



Photograph 3: View of the former road between Ullapool and Contin as it crosses through the project area.



Photograph 4: View of Lubfearn, a cottage and former township on the northern edge of the project area.



Photograph 5: View to southwest from Lubfearn towards the project area, showing establishing woodland in the middle ground and Corriemoillie wind farm turbines under construction in the background.